

# SPHEROS

**TRANSPORT REFRIGERATION UNITS FOR RIGID TRUCKS AND TRAILERS**

## **CRYOFRIDGE**

**450/650/950 single and multi-temps**



### **TRANSPORT REFRIGERATION WITH CONFIDENCE** **THE FUTURE IS FAST, GREEN AND EFFICIENT.**

The Key to CryoFridge's environmentally-friendly operation is nitrogen – a colourless and odourless gas constituting approximately 78% of Earth's atmosphere.

This silent running on the road emission free transport refrigeration system, is available in three liquid nitrogen tank volumes.

Reduced maintenance and service costs due to minimal moving parts ensures high operational reliability and overall cost effectiveness.

### **ADVANCED TECHNOLOGY - YOU CAN RELY ON.**

# CRYOFRIDGE 450/650/950

## FEATURES

<b>ENVIRONMENTAL ADVANTAGES:</b>	<b>ADVANTAGES:</b>	<b>STANDARD FEATURES:</b>
<ul style="list-style-type: none"><li>• Silent running</li><li>• On road emission free</li><li>• Zero particle emissions</li><li>• Clean and user friendly</li></ul>	<ul style="list-style-type: none"><li>• Quick Pull down</li><li>• No bulkhead mount unit</li><li>• Equipment longevity</li><li>• Simple operation</li></ul>	<ul style="list-style-type: none"><li>• Down-loadable diagnostics</li><li>• Multi-temperature systems on request</li><li>• Easily accessible controls</li></ul>

### Installation Kit Includes:

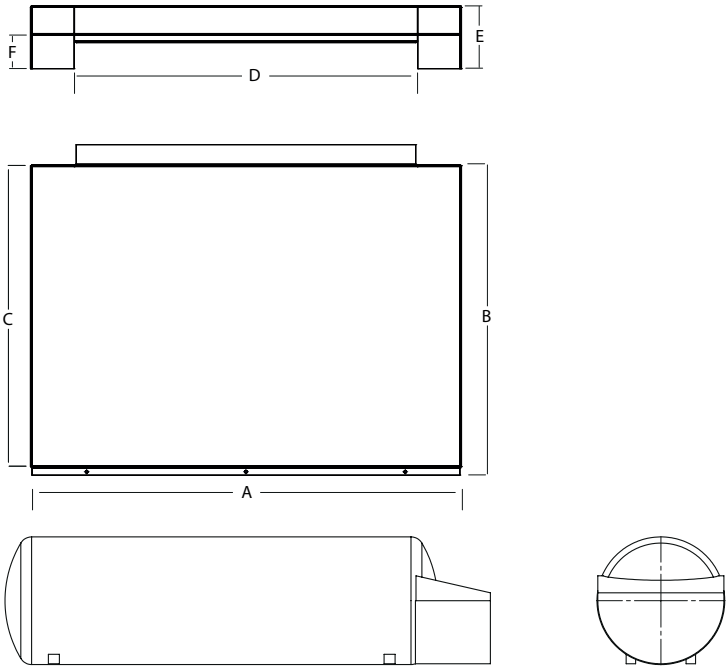
- Liquid nitrogen pressure vessel
- Evaporator
- Tank securing brackets
- Exhaust box
- Electrical control box
- Door switch

### Optional Extras

- Telematics
- Solar system to power the controls and evaporator fans

Evaporator dimensions in mm

	4 Fan	2 Fan
A	2038	1025
B	787	787
C	717	717
D	1834	819
E	150	150
F	62	62



## TECHNICAL DATA

		Cryo MT 950	Cryo MT 650	Cryo 650	Cryo 450
Cooling capacity @30°C ambient temperature (w)	0°C to -25°C	18000	10000	10000	10000
Air Volume Flow (m³/h)	4 fan Evaporator	3072	3072	3072	
	2 fan Evaporator	1462	1462		1462
Pressure vessel Gross volume (m³)		1	0.65	0.65	0.45
Weight (kg)	Pressure vessel	508	370	370	287
	Kit	250	250	190	160
	Total	726	810	560	447
Working pressure Bar		2.6	2.6	2.6	2.6