

HEAT/COOL UNIT FOR SPECIALITY AND EMERGENCY VEHICLES

TROPICOOOL

22090 TXV SERIES



EXTREME CLIMATE SOLUTIONS

A series of extreme climate solutions for both warm and cold weather conditions. With maximum flexibility in system configurations, a properly balanced system is obtainable due to our wide array of heat cool models for our specialty and emergency vehicle customers.

WWW.SPHEROS.COM/US

SPHEROS

HIGHLIGHTS



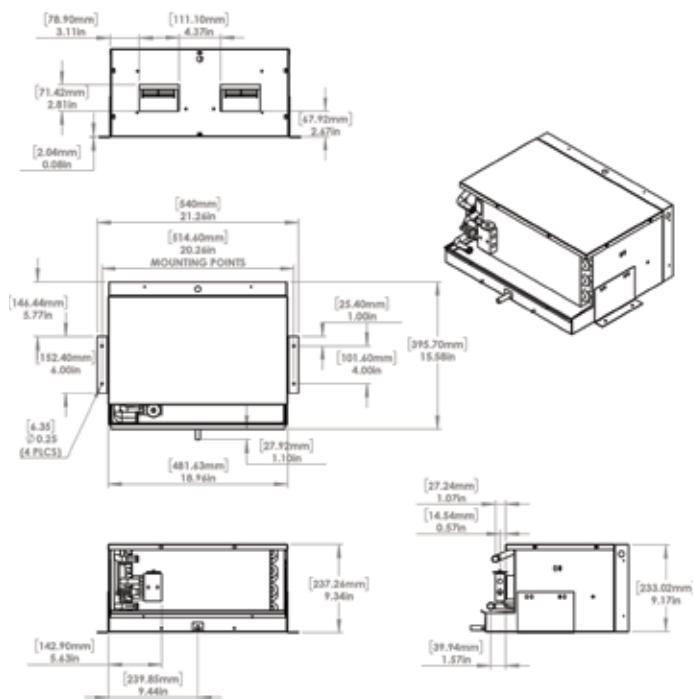
Design

- Standard for ambulance and emergency vehicle industry
- Dynamically balanced twin shaft blower assembly
- Combination enhanced Heat/Cool coil
- Thermal Expansion Valve Block style design used with a Filter/Drier to protect the system.



Key Components

- Coil: 11139357C
- Blower Assembly: 11132191B
- TXV Block: 11126628A
- Freeze-up Thermostat: 11126844A
- Filter/Drier: 11127154B



TECHNICAL DATA

Model	Up to Cooling Capacity	Evaporator Airflow	Power Consumption	Nominal Voltage	Heating Capacity	Dimensions L x W x H	Weight
22090	32,000 BTU/h	650 CFM	19 Amps	12V	43,300 BTU/h	18 x 15 x 9 in	30 lbs.